



You now need access ID when delivering waste to our recycling stations

Choose between vehicle number plate recognition,
a QR code or a chip key



Avfall Sør

Together we give waste new life

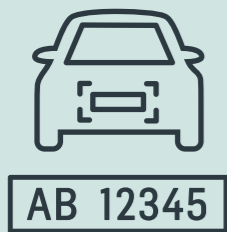
From spring 2022, a customer identification system will be introduced at Avfall Sør's recycling stations: on 10 May at Mjåvann and 24 May at Støleheia. Customer identification will also be introduced at the new Sørlandsparken recycling station when it opens.

The types of access ID you can use are vehicle number plate recognition, QR code scanning and chip key scanning. You can obtain and manage your digital access ID and other customer details using our new customer portal Min side.

What is access ID?

Access ID is a form of customer identification that visitors must use to open the barriers and enter Avfall Sør's recycling stations.

You can choose between three types of access ID:



1. VEHICLE NUMBER PLATE RECOGNITION

Registering your vehicle number plate is a simple and efficient way of using access ID at our recycling stations.

By using automatic number plate recognition, our customers are identified on entry. The barrier will open automatically.



2. QR CODE SCANNING

QR codes are a simple method of using digital access ID at our recycling stations. The code must be scanned at the self-service machine on entry. The barrier will open automatically.



3. CHIP KEY SCANNING

Customers with access to the underground waste system can use their electronic chip keys as access ID at our recycling stations. The chip key must be scanned at the self-service machine on entry. The barrier will open automatically.

Register and obtain your access ID on MIN SIDE:

- Go to minside.avfallsor.no
- Log in
- Select your property and manage your digital access ID

PLEASE NOTE! The customer portal Min side is only available i Norwegian.

Who can use Min side and obtain access ID?

To gain access to Min side and your access ID, you must be registered as a customer with Avfall Sør, and be a registered property owner in Kristiansand or Vennesla.

You will need electronic ID to log into the service.

As a customer, you can also share access to the recycling stations with others (e.g., family members and lessees). The person assigned access will receive their access ID by text message in the form of a unique QR code. The access ID is active until deleted by you or the user. Visits to the recycling stations will be registered to your property.

Why we are introducing customer identification

Customer identification ensures that the people visiting our recycling stations are households that pay waste collection charges in Kristiansand and Vennesla.

As a customer with Avfall Sør, your waste collection charges include waste delivery to Avfall Sør's recycling stations.

Better customer service and more sorting at the recycling stations.

Our goal is to reduce the amount of time our employees spend on access control giving them more time to guide visitors in waste sorting. This will in turn improve the degree of material recovery.

Better statistics and more efficient use of resources at the recycling stations.

Avfall Sør wishes to optimise operation of the facilities when it comes to opening hours, staffing and service.

Other digital services on Min side

Visit overview — see statistics of your visits to the recycling stations.

Waste collection calendar — see your waste collection days.

Waste collection history — see an overview of the number of collections in the current year for the different categories of waste.

Avfall Sør's overriding goal is to provide good, flexible, digital solutions for our customers. Min side has been an important step in achieving this goal and more digital services will be introduced in the future.



DO YOU HAVE ANY QUESTIONS?

You will find more information on our website, or you can contact our customer service centre.

avfallsor.no
(+47) 38 17 70 70



New recycling station in Sørlandsparken — opens in summer 2022

The current recycling station at Skibåsen in Sørlandsparken is too small to meet future developments. The facility is therefore being moved to Sørlandsparken Øst close to IKEA.

The new recycling station will have greater capacity and more eco-friendly operation than the current facility:

- More space
- Safer traffic flow
- No fossil-fuel machinery
- Wood used as a building material
- Solar panels
- Introduction of a customer identification system to effectively ensure that the recycling station's operation is paid for by the people who visit it



Avfall Sør

Together we give waste new life